



## **PB61030** Series

### **Long Range Thermal Imaging Hybrid Camera**

**Up to 25 km for Vehicle  
detection & 17 Km for  
recognition**

- Thermal: 25-300mm thermal lens, 12X continuously zoom
- Visible: 10-1000mm/10-1200mm visible lens, 100X/120X optical zoom
- NETD 45mk enhance the imaging details even in foggy/rainy/snowy weather.
- Visible camera support EIS, optical defog, HLC, BLC, 3D noise reduction, 120dB.
- One integral aluminium alloy housing, weather-proof IP 66, waterproof, anti-dust.
- Visible camera support EIS, optical defog, HLC, BLC, 3D noise reduction, 120dB.
- Designed for Extreme weather condition.
- Support Radar Integration Option, Fire Detection , Auto tracking options

### **View over**

PB61030 series is a TOP LOAD Long Range IR Thermal Imaging Camera platform that are developed based on the latest fifth generation uncooled infrared technology and continuous zoom infrared optical technology. The 17  $\mu$ m uncooled focal plane imaging detector with high sensitivity and adopt with 384  $\times$  288/640  $\times$  512/1280  $\times$  1024 resolution. Equipped with high resolution daylight camera with defog function for day time details observation.

One integral aluminum alloy housing makes sure the camera works well outdoor. In combination with 360-degree PT, the camera is capable of conducting 24 hours real-time monitoring. The camera is IP66 rates, which ensures camera's normal operation under tough weather conditions.



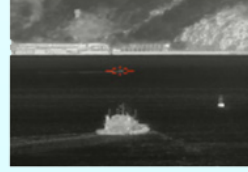
Dual Sensors One IP



Auto Track



High Resolution



## Features

- Thermal: 25-300mm thermal lens, 12X continuously zoom
- Visible: 10-1000mm/10-1200mm visible lens, 100X/120X optical zoom
- NETD 45mk enhance the imaging details even in foggy/rainy/snowy weather.
- Special AS optical zooming lens and 3CAM high-precision optomechanical.
- Function of life index recording for thermal camera.
- Non-uniform image correction technology, good image uniformity and dynamic range.
- SDE digital image processing, no image noise, 16 pseudo color images.
- Visible camera support EIS, optical defog, HLC, BLC, 3D noise reduction, 120dB.
- One integral aluminum alloy housing, weatherproof IP 66, waterproof, anti-dust.
- One IP address optional: Visible, thermal camera can view, set and control by one IP address.

## Specifications

Model		PB61030-42100	PB61030-42120
Visible Effective Distance (DRI)	Visible Model	42100	42120
	Vehicle (2.3*2.3m)	Detection: 23km; Recognition: 16km; Identification: 11km	Detection: 25km; Recognition: 17km; Identification: 12km
	Human (1.8*0.6m)	Detection: 12km; Recognition: 6.5km; Identification: 3.5km	Detection: 13km; Recognition: 7km; Identification: 4km
Thermal Effective Distance (DRI)	Vehicle (2.3*2.3m)	Detection: 20km; Recognition: 6.7km; Identification: 3.3km	
	Human (1.8*0.6m)	Detection: 8km; Recognition: 5km; Identification: 2.5km	
	Fire Detection	14km (10km for 2*2m fire)	
	IVS Range	9km for Vehicle; 3.3km for Human	
Thermal Sensor	Sensor	5th generation uncooled FPA sensor	
	Effective Pixels	640x512, 50Hz (384 and 1280 pixel optional)	
	Pixel Size	17μm	
	NETD	≤45mK	
Thermal Lens	Spectral Range	7.5 ~ 14μm, LWIR	
	Focal length	25-300mm, 12X	
	FOV (640*512)	20.6° × 16.5° ~ 2.1° × 1.6°	
	Angular radian	0.56~0.057mrad	
Visible Camera (different lens optional)	Digital Zoom	1~64X Continuously zoom (step:0.1)	
	Sensor	1/1.8" Star Level CMOS, Integrated ICR Dual Filter D/N Switch	
	Resolution	2560(H)x1440(V)	
	Frame Rate	32Kbps~16Mbps, 60Hz	
	Min. Illumination	0.0005Lux(Color), 0.0001Lux(B/W)	
	SD Card	Support	

Visible Lens	Lens Focal Length	10~1000mm	10~1200mm
	Lens Zoom	100X	120X
	Image Stabilization	Support	
	Optical Defog	Support	
	Focus Control	Manual/Auto	
	Digital Zoom	8X	8X
Image	Image Stabilization	Support Electronic Image Stabilization	
	Enhance	Stable operational temperature without TEC, starting time less than 4 seconds	
	SDE	Support SDE digital image processing	
	Pseudo Color	16 pseudo color and B/W, B/W inverse	
	AGC	Support	
	Ranging Ruler	Support	
Enhance	Strong Light Protect	Support	
	Temp Correction	Thermal imaging clarity is not affected by temperature.	
	Scene mode	Support multi-configuration scenarios, adapt to different environment	
	Lens Servo	Support lens preset, focal length return and focal length location.	
	Azimuth Information	support angle real-time return and positioning; azimuth video overlay real-time display.	
	Parameter Setting	OSD Menu Remote Call Operations.	
	Diagnostic Functions	Disconnection alarm, support IP conflict alarm, support illegal access alarm (illegal access times, lock time can be set), support SD card abnormal alarm (SD space is insufficient, SD card error, no SD card), video masking alarm, anti-sun damage (support threshold, masking time can be set).	

Intelligent (One IP Only)	Life Index Recording	Working time, shutter times, ambient temperature, core device temperature	
	Fire Detection	Threshold 255 levels, targets 1-16 can be set, hot spot tracking	
	AI Analysis	support intrusion detection, boundary crossing detection, entering/leaving area detection, motion detection, wandering detection, people gathering, fast moving, target tracking, items left behind, items taken; people/vehicle target detection, face detection; and support 16 area settings; support intrusion detection people, vehicle filtering function; support target temperature filtering	
	Auto-tracking	Single/multi scene tracking; panoramic tracking; alarm linkage tracking	
	AR Fusion	512 AR intelligent information fusion	
	Distance Measure	Support passive distance measurement	
	Image fusion	Support 18 kinds of double light fusion mode, support picture-in-picture function	
PTZ	Patrol	6*patrol route, 1* patrol line	
	Rotation	Pan: 0~360°, tilt: -45~+45°	
	Speed	Pan: 0.01~30°/S, Tilt: 0.01~15°/S	
	Preset	3000	
	Enhance	Fan/Wiper/Heater attached	
Video Audio (Single IP)	Thermal Resolution	1920×1080; 1280×1024; 1280×960; 1024×768; 1280×720; 704×576; 640×512; 640×480; 400×300; 384×288; 352×288; 352×240	
	Visible Resolution	2560×1440; 1920×1080; 1280×1024; 1280×960; 1024×768; 1280×720; 704×576; 640×512; 640×480; 400×300; 384×288; 352×288; 352×240	
	Record Rate	32Kbps~16Mbps	
	Audio encoding	G.711A/ G.711U/G726	
	OSD settings	Support OSD display settings for channel name, time, gimbal orientation, field of view, focal length, and preset bit name settings	
Interface	Ethernet	RS-485 (PELCO D protocol, baud rate 2400bps, RS-232 (option, RJ45	
	Protocol	IPv4/IPv6, HTTP, HTTPS, 802.1x, Qos, FTP, SMTP, UPnP, SNMP, DNS, DDNS, NTP, RTSP, RTP, TCP, UDP, IGMP, ICMP, DHCP, PPPoE, ONVIF	
	Video Output	PAL/NTSC	
	Power	AC12V /DC24V	
	Compression	H.265 / H.264 / MJPEG	
Environmental	Operate Temp	-25°C~+55°C (-40°C (optional))	
	Storage Temp	-35°C~+75°C	
	Humidity	<90%	
	Ingress Protect	IP66	
	Housing	PTA three-resistance coating, Seawater corrosion resistance, Aviation waterproof plug	
	Anti-fog/salty	PH 6.5~7.2	
	Power	150W (Peak)	
	Weight	50kg	

### Malaysia solution provider



Unit 17-03 & 17-04, Tower 1, Faber Towers, Jalan Desa Bahagia, Taman Desa, 58100 Kuala Lumpur Direct Phone: +60379846781; Mobile: +60122352710  
www.prismabytes.com Email: bd@prismabytes.com