



## **PB6516** Series

### **Long Range Thermal Imaging Hybrid Camera**

**Up to 20km for Vehicle  
detection & 15 Km for  
recognition**

640X512 -5th Gen uncooled Thermal  
2 MP or 4 MP HD Zoom Camera  
72X , 86X or 92X Optical Zoom  
Rugged , Integrated PT platform

IP66 Standard

Designed for Extreme weather condition.

Support Radar Integration Option, Fire  
Detection , Auto tracking options

### **View over**

PB6 series is a TOP LOAD Long Range IR Thermal Imaging Camera platform that are developed based on the latest fifth generation uncooled infrared technology and continuous zoom infrared optical technology. The 17  $\mu\text{m}$  uncooled focal plane imaging detector with high sensitivity and adopt 640  $\times$  512/1280  $\times$  1024 resolution. Equipped with high resolution daylight camera with defog function for day time details observation.

One integral aluminum alloy housing makes sure the camera works in all extreme weather condition. In combination with 360-degree Pan & Tilt, the camera is capable of conducting 24 hours real-time monitoring. The camera is IP66 rated, which ensures camera's normal operation under tough weather conditions.



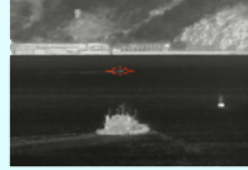
Dual Sensors One IP



Auto Track



High Resolution



## Features

- **Thermal:** 31-155mm thermal lens, 5X continuously zoom
- **Visible:** 6.1-440mm/6.1-561mm/10-860mm visible lens, 72X/92X/86X optical zoom
- NETD 45mk enhance the imaging details even in foggy/rainy/snowy weather.
- Special AS optical zooming lens and 3CAM high-precision optomechanical.
- Function of life index recording for thermal camera.
- Non-uniform image correction technology, good image uniformity and dynamic range.
- SDE digital image processing, no image noise, 16 pseudo color images.
- Visible camera support EIS, optical defog, HLC, BLC, 3D noise reduction, 120dB.
- One integral aluminum alloy housing, weatherproof IP 66, waterproof, anti-dust.
- One IP address optional: Visible, thermal camera can view, set and control by one IP address.

## Specifications

Model	PB6516-2272	PB6516-2292	PB6516-4286
Visible Model	2272	2292	4286
Visible Effective Distance (DRI)	Vehicle (2.3*2.3m)	Detection: 15km; Recognition: 8km; Identification: 5km	Detection: 18km; Recognition: 10km; Identification: 7km
	Human (1.8*0.6m)	Detection: 6km; Recognition: 4km; Identification: 1.5km	Detection: 8km; Recognition: 5km; Identification: 2km
Thermal Effective Distance (DRI)	Vehicle (2.3*2.3m)	Detection: 13km; Recognition: 3.4km; Identification: 1.7km	
	Human (1.8*0.6m)	Detection: 4.8km; Recognition: 2.5km; Identification: 1.3km	
	Fire Detection	10km (6km for 2*2m fire)	
IVS Range	4.6km for Vehicle; 1.6km for Human		
Thermal Sensor	Sensor	5th generation uncooled FPA sensor	
	Effective Pixels	640x512, 50Hz (384 and 1280 pixel optional)	
	Pixel Size	17μm	
	NETD	≤45mK	
Thermal Lens	Spectral Range	7.5 ~ 14μm, LWIR	
	Focal length	31-155mm, 5X	
	FOV (640*512)	20° × 15° ~ 4° × 3°	
	Angular radian	0.56~0.11mrad	
Digital Zoom	1~64X Continuously zoom (step:0.1)		

<b>Visible Camera (different lens optional)</b>	Sensor	1/1.8" Star Level CMOS, Integrated ICR Dual Filter D/N Switch			
	Resolution	1920(H)x1080(V) / 2560(H)x1440(V)			
	Frame Rate	32Kbps~16Mbps, 60Hz			
	Min. Illumination	0.0005Lux(Color), 0.0001Lux(B/W)			
	SD Card	Support			
<b>Visible Lens</b>	Lens Focal Length	6.1~440mm	6.1~561mm	10-860mm	
	Lens Zoom	72X	92X	86X	
	Image Stabilization	Support			
	Optical Defog	Support			
	Focus Control	Manual/Auto			
	Digital Zoom	8X	8X	16X	
<b>Image</b>	Image Stabilization	Support Electronic Image Stabilization			
	Enhance	Stable operational temperature without TEC, starting time less than 4 seconds			
	SDE	Support SDE digital image processing			
	Pseudo Color	16 pseudo color and B/W, B/W inverse			
	AGC	Support			
	Ranging Ruler	Support			
<b>Enhance</b>	Strong Light Protect	Support			
	Temp Correction	Thermal imaging clarity is not affected by temperature.			
	Scene mode	Support multi-configuration scenarios, adapt to different environment			
	Lens Servo	Support lens preset, focal length return and focal length location.			
	Azimuth Information	support angle real-time return and positioning; azimuth video overlay real-time display.			
	Parameter Setting	OSD Menu Remote Call Operations.			
	Diagnostic Functions	Disconnection alarm, support IP conflict alarm, support illegal access alarm (illegal access times, lock time can be set), support SD card abnormal alarm (SD space is insufficient, SD card error, no SD card), video masking alarm, anti-sun damage (support threshold, masking time can be set).			
	Life Index Recording	Working time, shutter times, ambient temperature, core device temperature			
	<b>Intelligent (One IP Only)</b>	Fire Detection	Threshold 255 levels, targets 1-16 can be set, hot spot tracking		
		AI Analysis	Support intrusion detection, boundary crossing detection, entering/leaving area detection, motion detection, wandering detection, people gathering, fast moving, target tracking, items left behind, items taken; people/vehicle target detection, face detection; and support 16 area settings; support intrusion detection people, vehicle filtering function; support target temperature filtering		
Auto-tracking		Single/multi scene tracking; panoramic tracking; alarm linkage tracking			
AR Fusion		512 AR intelligent information fusion			
Distance Measure		Support passive distance measurement			
Image fusion		Support 18 kinds of double light fusion mode, support picture-in-picture function			
<b>PTZ</b>	Patrol	6*patrol route, 1* patrol line			
	Rotation	Pan: 0~360°, tilt: -45~+45°			
	Speed	Pan: 0.01~30°/S, Tilt: 0.01~15°/S			
	Preset	3000			
	Enhance	Fan/Wiper/Heater attached			
<b>Video Audio (Single IP)</b>	Thermal Resolution	1920×1080; 1280×1024; 1280×960; 1024×768; 1280×720; 704×576; 640×512; 640×480; 400×300; 384×288; 352×288; 352×240			
	Visible Resolution	2560×1440; 1920×1080; 1280×1024; 1280×960; 1024×768; 1280×720; 704×576; 640×512; 640×480; 400×300; 384×288; 352×288; 352×240			
	Record Rate	32Kbps~16Mbps			
	Audio encoding	G.711A/ G.711U/G726			
	OSD settings	Support OSD display settings for channel name, time, gimbal orientation, field of view, focal length, and preset bit name settings			
<b>Interface</b>	Ethernet	RS-485 (PELCO D protocol, baud rate 2400bps, RS-232 (option) , RJ45			
	Protocol	IPv4/IPv6, HTTP, HTTPS, 802.1x, Qos, FTP, SMTP, UPnP, SNMP, DNS, DDNS, NTP, RTSP, RTP, TCP, UDP, IGMP, ICMP, DHCP, PPPoE, ONVIF			
	Video Output	PAL/NTSC			
	Power	AC12V/DC24V			
	Compression	H.265 / H.264 / MJPEG			
<b>Environmental</b>	Operate Temp	-25°C~+55°C-40 (optional)			
	Storage Temp	-35°C~+75°C			
	Humidity	<90%			
	Ingress Protect	IP66			
	Housing	PTA three-resistance coating, Seawater corrosion resistance, Aviation waterproof plug			
	Anti-fog/salty	PH 6.5~7.2			
	Power	120W (Peak)			
	Weight	45kg			

Malaysia solution provider



Unit 17-03 & 17-04, Tower 1, Faber Towers, Jalan Desa Bahagia, Taman Desa, 58100 Kuala Lumpur Direct Phone: +60379846781; Mobile: +60122352710  
www.prismabytes.com Email: bd@prismabytes.com